

*J.B. Parrish*

COMMERCIAL  
real estate

[www.jrparrish.com](http://www.jrparrish.com)

9000 SOQUEL AVE

SUITE 200

SANTA CRUZ CA 95062

MAIN OFFICE

831.476.2222

FAX

831.464.5818

For More Information  
Contact Exclusive Agents:

JACKIE COPRIVIZA

831.476.2222 Ext. 101

831.234.0462 Cell

[jcopriv@comcast.net](mailto:jcopriv@comcast.net)

GREGG WALSH, SIOR

831.476.2222 Ext. 102

831.252.2585 Cell

[GSW200@aol.com](mailto:GSW200@aol.com)

# Available for Lease

## RESTAURANT/RETAIL SPACE



### WATSONVILLE CIVIC PLAZA



#### **NEW 140,000 sf 4 Story Office Building**

**Location:** 275 Main St. @ 2nd Street

#### **Available Space:**

Restaurant/Retail Space:	Suite 101: 1,500-3,006 sf
Office:	Suite 203: 1,646 sf
	Suite 401: 1,092 sf

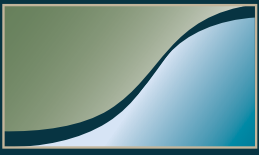
**Availability:** **NOW**

**Parking:** 460 Public Parking Structure

**Day Time Employment:** 120 People Employed  
Within the Building

**Anchored By:** Superior Courts of California, Watsonville Public Library, City Of Watsonville Administrative Offices, City Council Chambers/Community Room

**Excellent opportunity to locate your business  
in the heart of Watsonville.**



*J.R. Parrish*

COMMERCIAL  
real estate

[www.jrparrish.com](http://www.jrparrish.com)

9000 SOQUEL AVE

SUITE 200

SANTA CRUZ CA 95062

MAIN OFFICE

831.476.2222

FAX

831.464.5818

For More Information

Contact Exclusive Agents:

JACKIE COPRIVIZA

831.476.2222 Ext. 101

831.234.0462 Cell

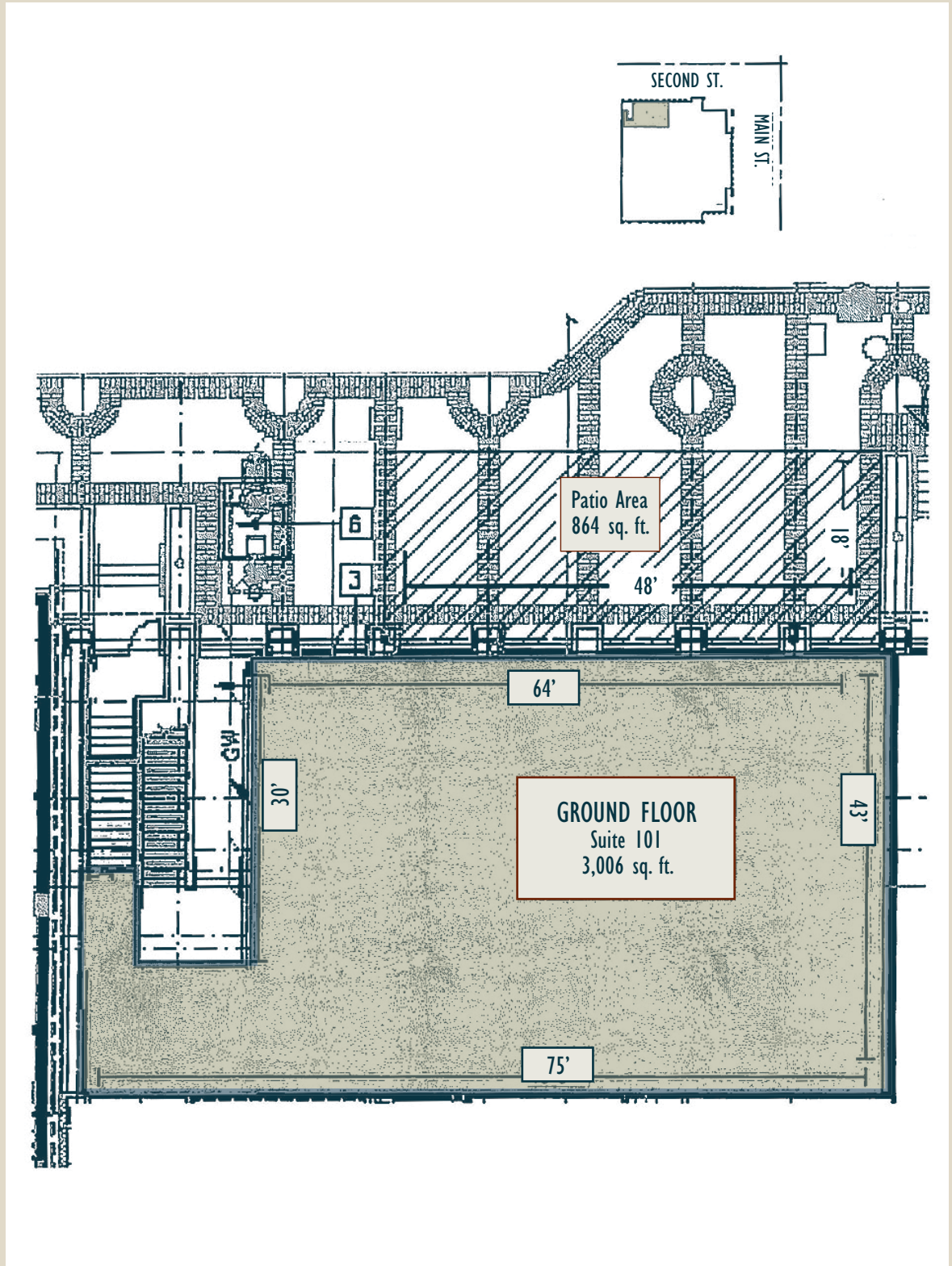
[jcopriv@comcast.net](mailto:jcopriv@comcast.net)

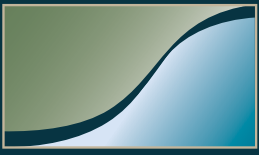
GREGG WALSH, SIOR

831.476.2222 Ext. 102

831.252.2585 Cell

[GSW200@aol.com](mailto:GSW200@aol.com)





*J.B. Parrish*

COMMERCIAL  
real estate

[www.jrparrish.com](http://www.jrparrish.com)

9000 SOQUEL AVE

SUITE 200

SANTA CRUZ CA 95062

MAIN OFFICE

831.476.2222

FAX

831.464.5818

For More Information

Contact Exclusive Agents:

JACKIE COPRIVIZA

831.476.2222 Ext. 101

831.234.0462 Cell

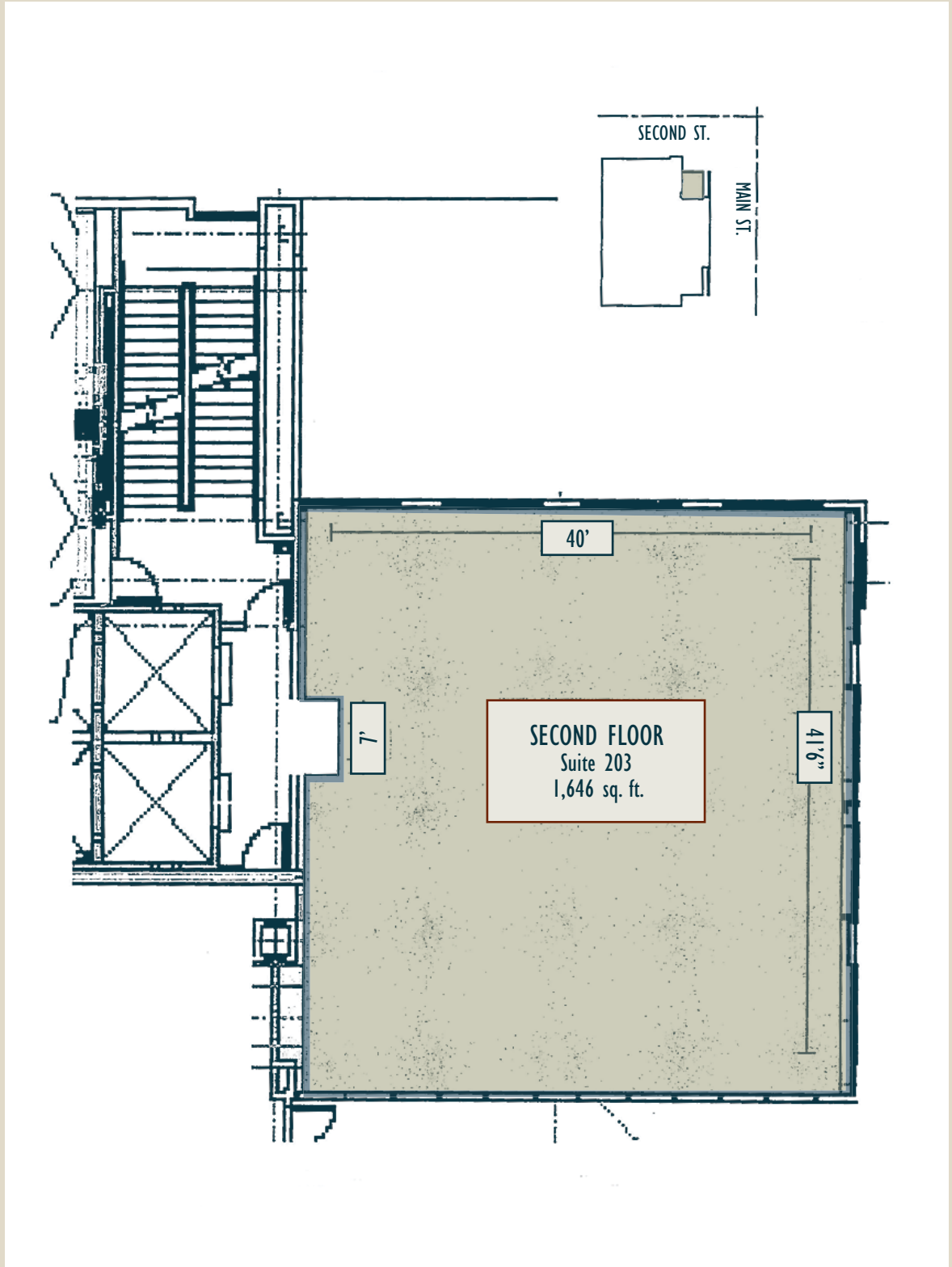
[jcopriv@comcast.net](mailto:jcopriv@comcast.net)

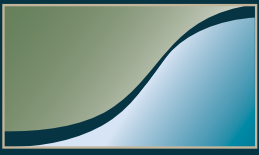
GREGG WALSH, SIOR

831.476.2222 Ext. 102

831.252.2585 Cell

[GSW200@aol.com](mailto:GSW200@aol.com)





*J.B. Parrish*

COMMERCIAL  
real estate

[www.jrparrish.com](http://www.jrparrish.com)

9000 SOQUEL AVE

SUITE 200

SANTA CRUZ CA 95062

MAIN OFFICE

831.476.2222

FAX

831.464.5818

For More Information

Contact Exclusive Agents:

JACKIE COPRIVIZA

831.476.2222 Ext. 101

831.234.0462 Cell

[jcopriv@comcast.net](mailto:jcopriv@comcast.net)

GREGG WALSH, SIOR

831.476.2222 Ext. 102

831.252.2585 Cell

[GSW200@aol.com](mailto:GSW200@aol.com)

